

# PRODUCT INFORMATION PACKET

**marathon®**  
Motors

Model No: 056B17F5307

Catalog No: F105

1.50 HP General Purpose Farm Duty Motor, 1 phase, 1800 RPM, 115/208-230 V, 56H Frame, TEFC  
Single Phase Farm Duty Motors



Regal and Marathon are trademarks of Regal Beloit Corporation or one of its affiliated companies.  
©2020 Regal Beloit Corporation, All Rights Reserved. MC017097E

**REGAL**

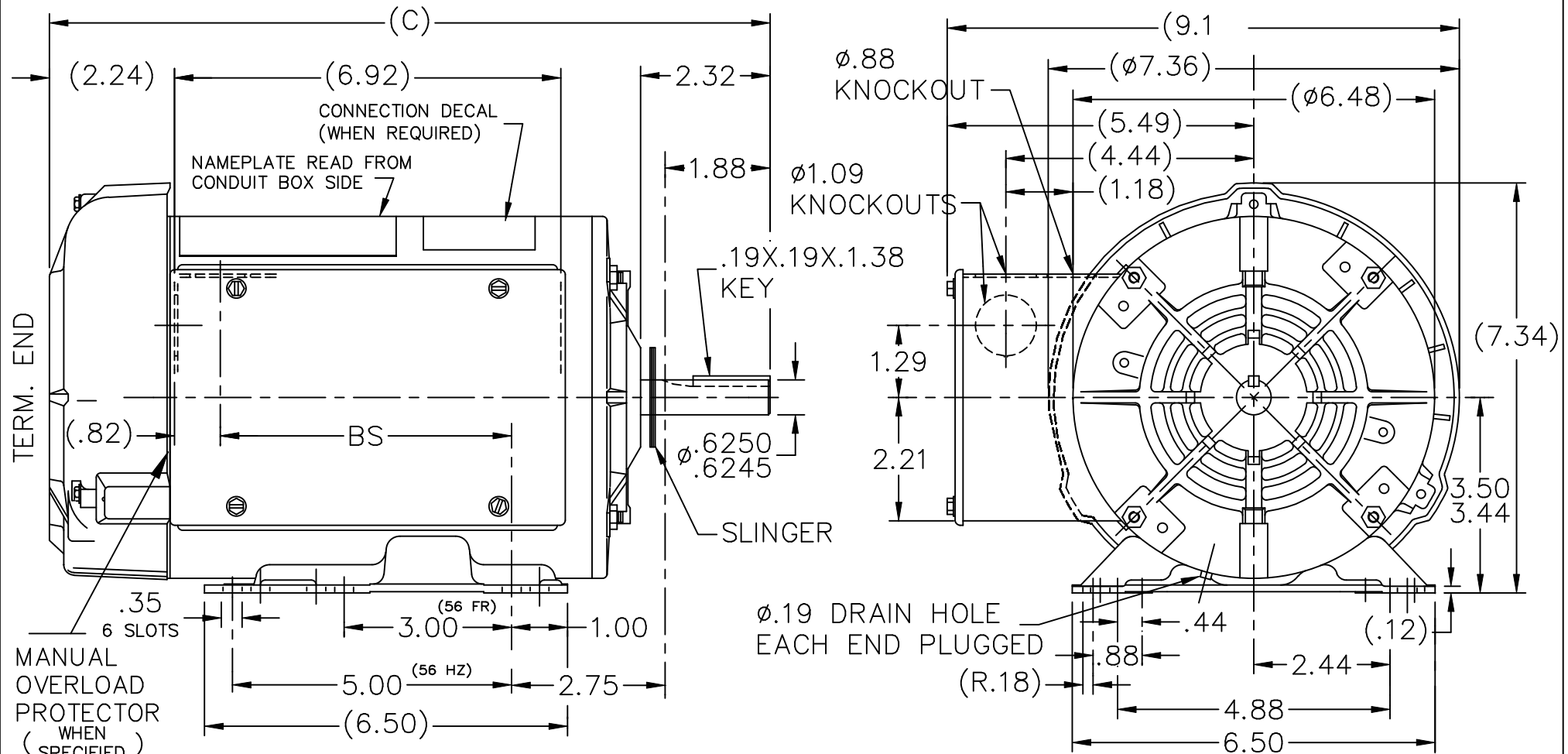
### Nameplate Specifications

Output HP	1.50 Hp	Output KW	1.1 kW
Frequency	60 Hz	Voltage	115/208-230 V
Current	15.2/8.2-7.6 A	Speed	1725 rpm
Service Factor	1.15	Phase	1
Efficiency	80 %	Power Factor	80
Duty	Continuous	Insulation Class	B
Design Code	L	KVA Code	J
Frame	56H	Enclosure	Totally Enclosed Fan Cooled
Thermal Protection	Manual	Ambient Temperature	40 °C
Drive End Bearing Size	6203	Opp Drive End Bearing Size	6203
UL	Recognized ( Not Protector)	CSA	Y
CE	N	IP Code	43


### Technical Specifications

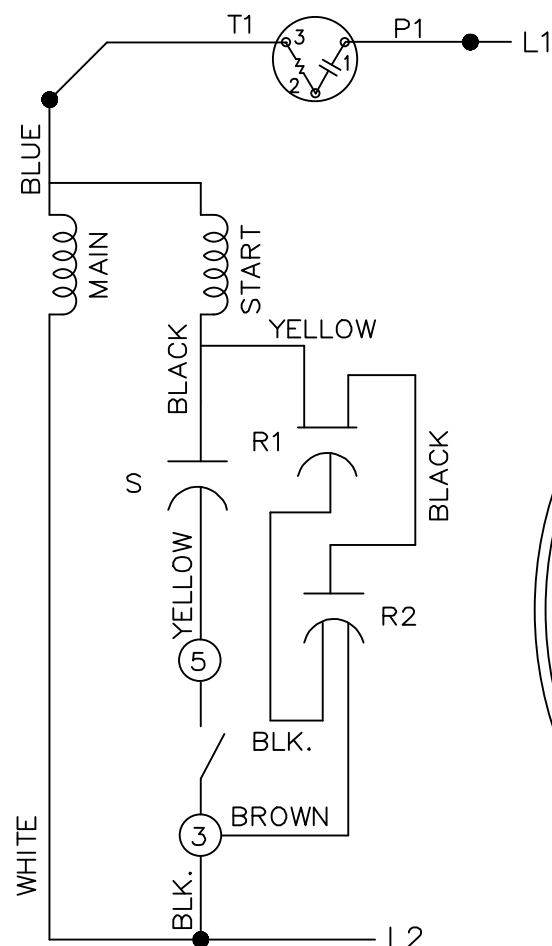
Electrical Type	Capacitor Start Capacitor Run	Starting Method	Across The Line
Poles	4	Rotation	Selective Counterclockwise
Resistance Main	0 Ohms	Mounting	Rigid Base
Motor Orientation	Horizontal	Drive End Bearing	Ball
Opp Drive End Bearing	Ball	Frame Material	Rolled Steel
Shaft Type	T	Overall Length	13.82 in
Frame Length	8.56 in	Shaft Diameter	0.625 in
Shaft Extension	2.312 in	Assembly/Box Mounting	F1 ONLY
Connection Drawing	A-102006-52	Outline Drawing	A-100138-856

This is an uncontrolled document once printed or downloaded and is subject to change without notice. Date Created:14/10/2020



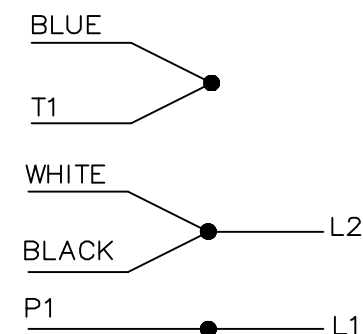
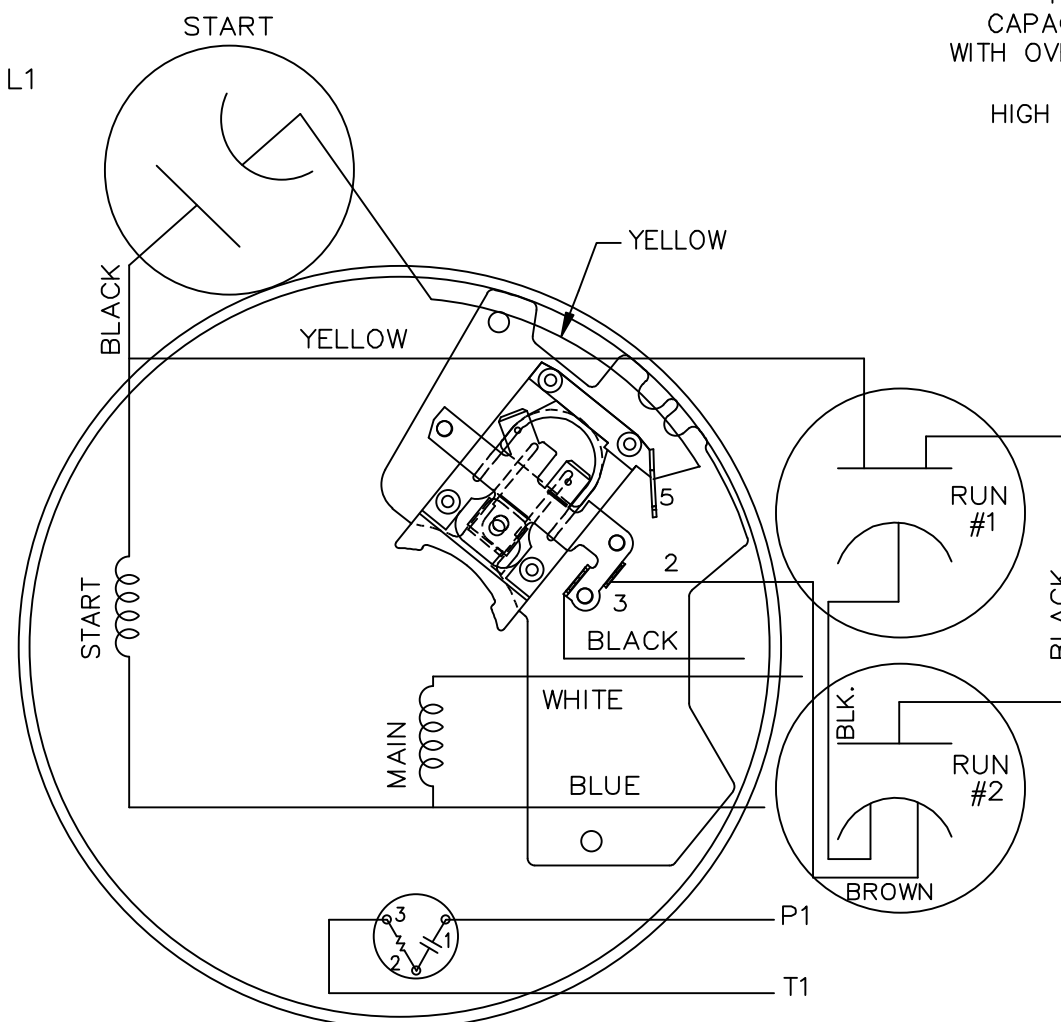
DASH	FR.	C	BS
856	56-85	13.82	6.14


				TOLERANCES UNLESS SPECIFIED			DRAWN ML 01-11-1992					
				DEC.	INCHES		CHK GK 01-12-1992					
				.X	±.1		APPD FG 01-12-1992					
				.XX	±.03		SCALE 3=8					
4	REDRAWN IN AUTOCAD	TAT 06-13-2005	ML	.XXX	±.005	TITLE OUTLINE 56 FR.-BB-TEFC-1Ø-MAN. PROT.				REF		
3	REDRAWN ON CADD, ADDED CONN. DECAL	ML 01-12-1992		.XXXX	±.0005	MAT'L.				FMF		
NO.	REVISION	BY & DATE	CHK	ANG	±7'30"	FINISH				PREV		
THIS DRAWING IN DESIGN AND DETAIL IS OUR PROPERTY AND MUST NOT BE USED EXCEPT IN CONNECTION WITH OUR WORK ALL RIGHTS OF DESIGN AND INVENTION ARE RESERVED THIS IS AN ELECTRONICALLY GENERATED DOCUMENT - DO NOT SCALE THIS PRINT			RFP		CAD FILE 100138			SIZE	DRAWING NO.	PAGE	OF	REV.
			DIST WP					A	100138			4

HIGH VOLTAGE C.W. SHAFT END

HIGH VOLTAGE  
CAPACITOR START-RUN  
WITH OVERLOAD SELECT ROT.

HIGH VOLTAGE C.W. FIXED  
SHAFT END



				TOLERANCES UNLESS SPECIFIED		 Dayton Electric Mfg. Co. Lake Forest IL 60045 USA	DRAWN UD 04/10/2012			
				DEC.	INCHES		CHK AB 04/10/2012			
				.X	±.1		APPD SKM 04/10/2012			
				.XX	±.02	TITLE CONNECTION DIAGRAM	SCALE 5=8			
				.XXX	±.005		REF 4UX55BA-WD			
				.XXXX	±.0005		FMF MU107464			
NO.	REVISION	BY & DATE	CHK	ANG	±7'30"	FINISH	PREV			
THIS DRAWING IN DESIGN AND DETAIL IS OUR PROPERTY AND MUST NOT BE USED EXCEPT IN CONNECTION WITH OUR WORK ALL RIGHTS OF DESIGN AND INVENTION ARE RESERVED THIS IS AN ELECTRONICALLY GENERATED DOCUMENT – DO NOT SCALE THIS PRINT			RFP		CAD FILE 102006-152		SIZE A	DRAWING NO. 102006-152	PAGE 1 OF 2	REV.
			DIST WP							

CERTIFICATION DATA SHEET

Model#:

56B17F5307 H

WINDING#:

ZB406 NONE 3

CONN. DIAGRAM:

A-102006-52

ASSEMBLY:

F1 ONLY

OUTLINE:

A-100138-856

TYPICAL MOTOR PERFORMANCE DATA

HP	KW	SYNC. RPM	F.L. RPM	FRAME	ENCLOSURE	KVA CODE	DESIGN
1 1/2	1.12	1800	1725	56H	TEFC	J	L

PH	Hz	VOLTS	FL AMPS	START TYPE	DUTY	INSL	S.F	AMB°C	ELEVATION
1	60	115/208-230	15.2/8.2-7.6	ACROSS THE LINE	CONTINUOUS	B3	1.15	40	3300

FULL LOAD EFF: 80	3/4 LOAD EFF: 80.5	1/2 LOAD EFF: 76.1	GTD. EFF	ELEC. TYPE	NO LOAD AMPS
FULL LOAD PF: 80	3/4 LOAD PF: 71.2	1/2 LOAD PF: 61	0	CAP START CAP RUN	8.1 / 4.1

F.L. TORQUE	LOCKED ROTOR AMPS	L.R. TORQUE	B.D. TORQUE	F.L. RISE°C
4.51 LB-FT	107.6 / 53.8	14.8 LB-FT 328	12.4 LB-FT 275	70

SOUND PRESSURE @ 3 FT.	SOUND POWER	ROTOR WK^2	MAX. WK^2	SAFE STALL TIME	STARTS /HOUR	APPROX. MOTOR WGT
0 dBA	10 dBA	0 LB-FT^2	0 LB-FT^2	0 SEC.	0	0 LBS.

\*\*\* SUPPLEMENTAL INFORMATION \*\*\*

DE BRACKET TYPE	ODE BRACKET TYPE	MOUNT TYPE	ORIENTATION	SEVERE DUTY	HAZARDOUS LOCATION	DRIP COVER	SCREENS	PAINT
STANDARD	BRAKE	RIGID	HORIZONTAL	FALSE	NONE	FALSE	NONE	GRAY (POWDER)

BEARINGS		GREASE	SHAFT TYPE	SPECIAL DE	SPECIAL ODE	SHAFT MATERIAL	FRAME MATERIAL
DE	OPE						
BALL	BALL						
6203	6203	POLYREX EM	T	NONE	NONE	1144 STRESSPROOF (C-223)	ROLLED STEEL

THERMO-PROTECTORS				THERMISTORS	CONTROL	SPACE /n HEATERS
THERMOSTATS	PROTECTORS	WDG RTDs	BRG RTDs			
NONE	MANUAL	NONE	NONE	NONE	FALSE	NONE VOLTS

If Inverter equals NONE, contact factory for further information

\*  
N  
O  
T  
E  
\*

INVERTER TORQUE: NONE		
INV. HP SPEED RANGE: NONE		
ENCODER: NONE		
NONE	NONE	
NONE	NONE	PPR
BRAKE:	PROVISIONS FOR KIT	NONE
NONE	P/N NONE	
NONE	NONE	
NONE FT-LB	NONE V	NONE Hz


**MARATHON ELECTRIC CORPORATION**

TYPICAL PERFORMANCE CURVE for AC MOTOR

Customer

Curve at

460

Volts

 HP 1.50

 PHASE 1

 Model No 56B17F5307
60

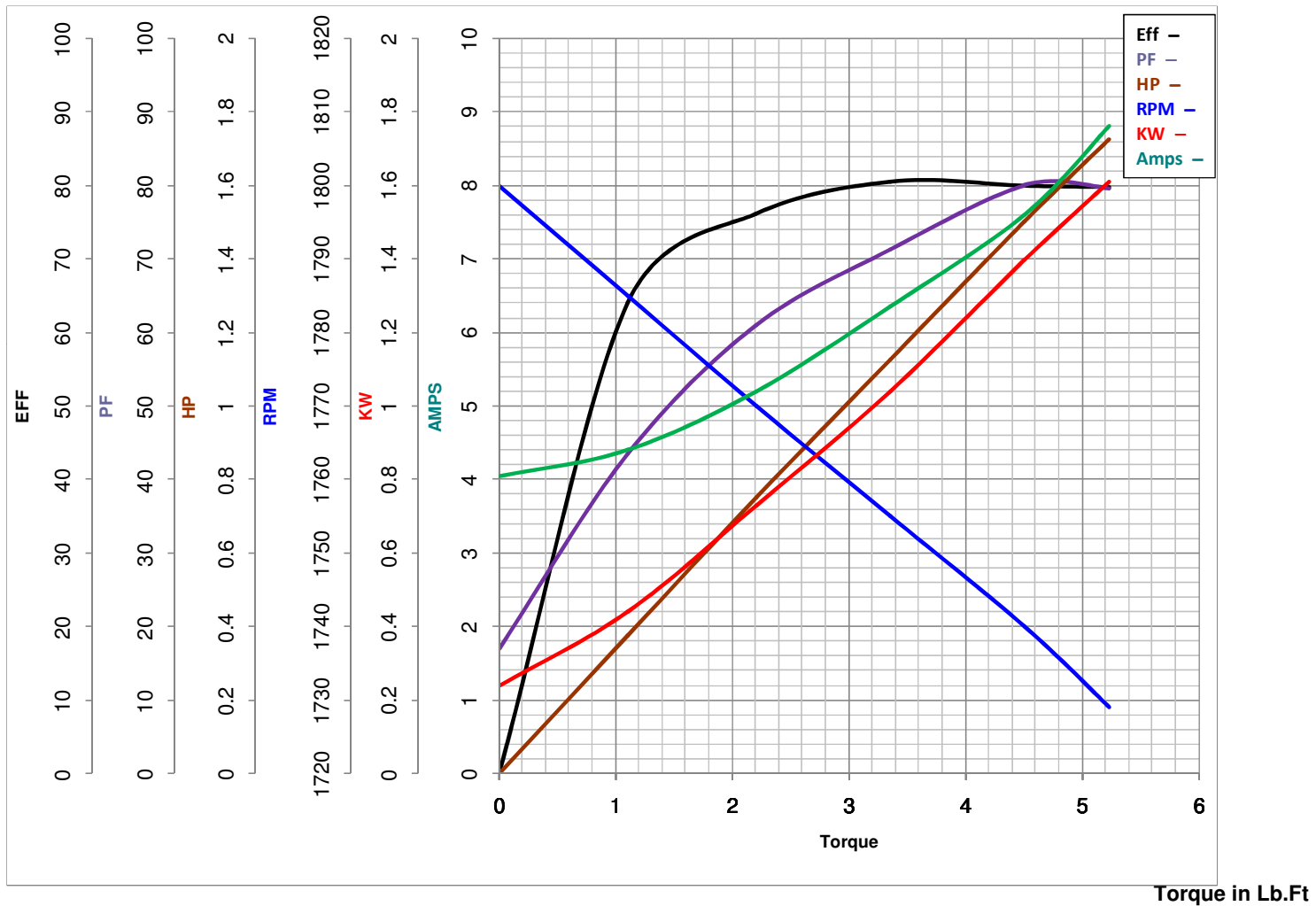
HZ

 VOLTS 115/208-230
1.5

HP

 Catalog No F105

 HZ 60

 RPM 1725


FL TORQUE 4.51 Lb.Ft  
 BD TORQUE 12.4 Lb.Ft  
 LR TORQUE 14.8 Lb.Ft

FL AMPS 15.2/8.2-7.6  
 PU TORQUE 12.6 Lb.Ft  
 LR AMPS 53.8

WINDING ZB406-3

Date 1/17/2019